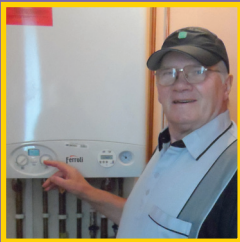


Energy advice on your... **Heating System**

Most homes in Shettleston are heated by a gas central heating system that operates from a boiler and outputs heat from room radiators. Using your controls efficiently can ensure you don't waste energy.

Boiler controls

- Make sure the temperature settings for hot water and heating are not too high.
- Check if the boiler has an Eco function and turn it ON.
- Use your timers to make the most out of your heating system.



Thermostat

- If you prefer to use your thermostat to control your heating system, set this between 18 – 21°C.
- Avoid setting your thermostat to the highest setting.



Radiator controls

- Your TRVs control the output from radiators. If you don't use a particular room turn these down or set at frost settings.



Please contact your repairs team on 0808 202 6565, if you are a SHA tenant without a hall thermostat or TRV controls and would like these installed.

Energy advice on your heating system

Storage heating

Input controls

- The input control sets how much heat is stored.
- Whenever you need heat, the switch should be left in the 'ON' position. It should be kept on a low setting during milder weather, when only a small amount of heat needs to be stored. In colder weather, set the input to a higher setting to store more heat.

Output controls (regulates how much stored heat is released)

- Set low before going to bed to store your heat at the cheapest rate for when you need it.
- Set higher when you want to heat your home.
- With any electric heating system, make sure you are on the best tariff for this system.

Portable heaters

- If using more than one portable heater, this might prove more expensive than using your heating system.

For further information on heating your home efficiently, contact your maintenance officer or the SEA team.

For free energy advice and to arrange a home visit, please call our energy advisers, **Angela** or **Evelyn**, on...**Freephone 0808 202 6565**

Shettleston Energy Advice is made possible through funding from the Climate Challenge Fund